



# RECEPTOR

A Bluetooth Temperature Probe for Inspection



Water Resistant (IP65)  
Includes Rechargeable Battery  
Range: -30°C to +120°C  
-22°F to +248°F

# Technical Specifications

## Complete Receptor Unit

Dimensions (LxWxD):	209mm x 23mm x 17mm (8.23" x 0.91" x 0.67")
Handle Material:	Stainless steel
Weight:	128g (4.52oz)
Connector:	microUSB for charging
Battery:	Integrated rechargeable Li-Ion battery
Battery Life:	>100 hours of measurements on a single charge
Bluetooth Technology:	BLE (Bluetooth 4.0 also called Bluetooth Smart)
Security:	"Just Works" pairing, encrypted communication
Operating Temperature:	0°C to 40°C
Non-operating Temperature:	-30°C to 70°C
Relative Humidity:	10% to 90%
Certifications:	FCC, CE, IP65 preliminary rating (testing underway)

## Probe

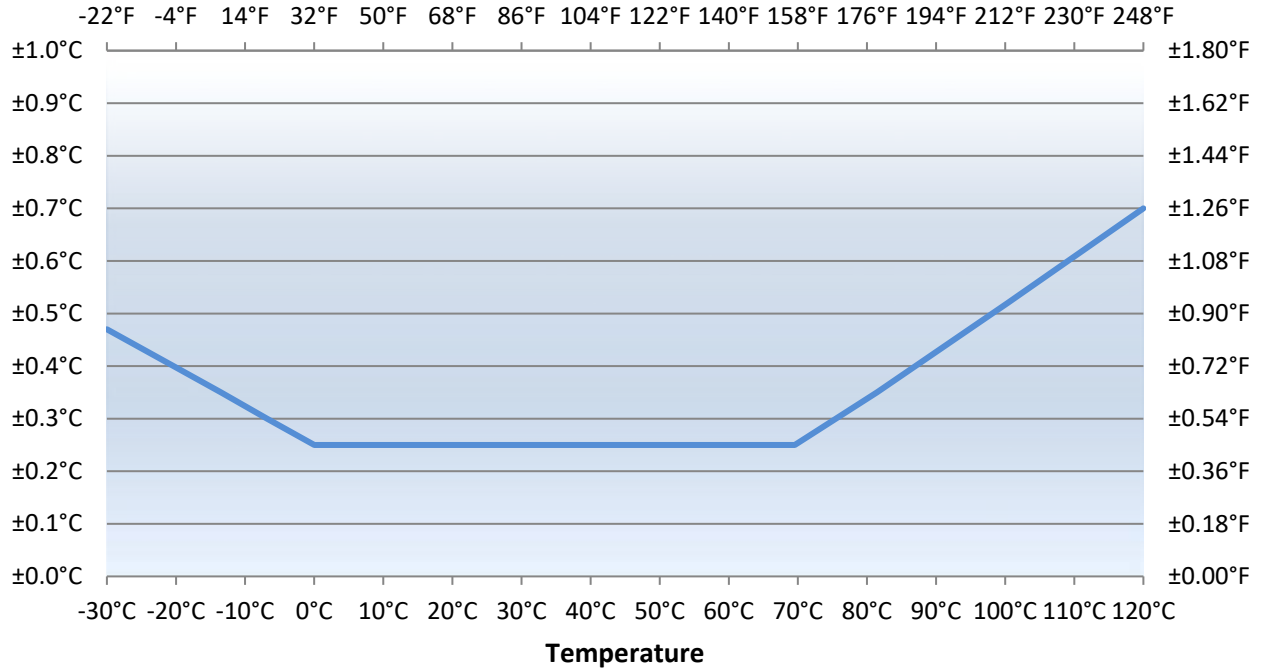
Probe Length & Diameter:	97mm, Ø 3mm (3.82", Ø 0.12")
Probe Material:	Stainless steel
Measurement Range:	-30°C to +120°C (-22°F to +248°F)
Accuracy:	±0.25°C (±0.45°F) at 25°C (77°F).
Response time:	In water, with stirring: 4 sec (to reach 90% of value)

## iOS/Android App

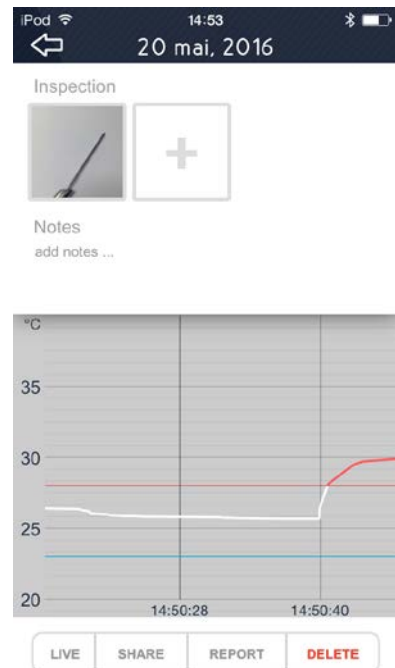
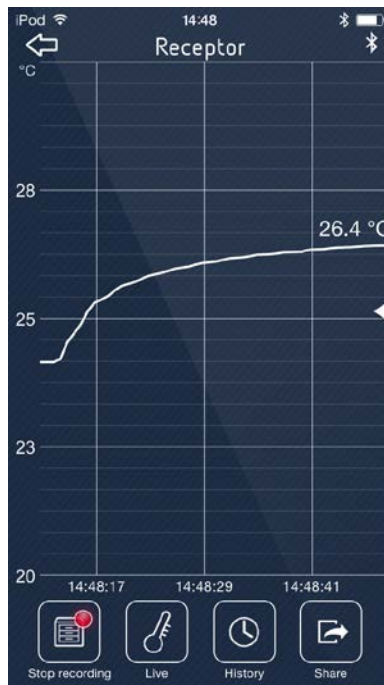
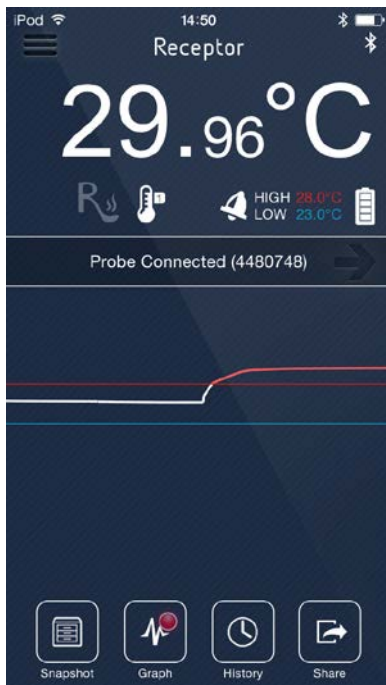
Features:	<p><b>Live Display</b> – Shows useful data in one shot.</p> <p><b>Graphs</b> – With pan and zoom touch support.</p> <p><b>Alarms</b> – Generate alarms when temperature goes outside a configurable (lower and/or upper) limit. On iPhone, call other phones when that happens.</p> <p><b>Snapshot Record</b> – Ability to record a single reading, along with title, picture and note.</p> <p><b>Continuous Record</b> – Ability to continuously record readings as well as to add notes, take a picture and drop a pin on the graph.</p> <p><b>History</b> – Access all your previous records.</p> <p><b>Reports</b> – Generate PDF reports with min, max, average temperature and standard deviation.</p>
Display Resolution:	0.01°C/0.01°F
iCelsius App Supported On:	iOS device with iOS 7.0 or later. Android device with Android 4.3 or later.
Data Export:	Export by email or to iTunes (CSV) or as an image.
Units:	Ability to select [°C] or [°F].
API:	We provide an API to selected developers willing to integrate our technology into their apps.

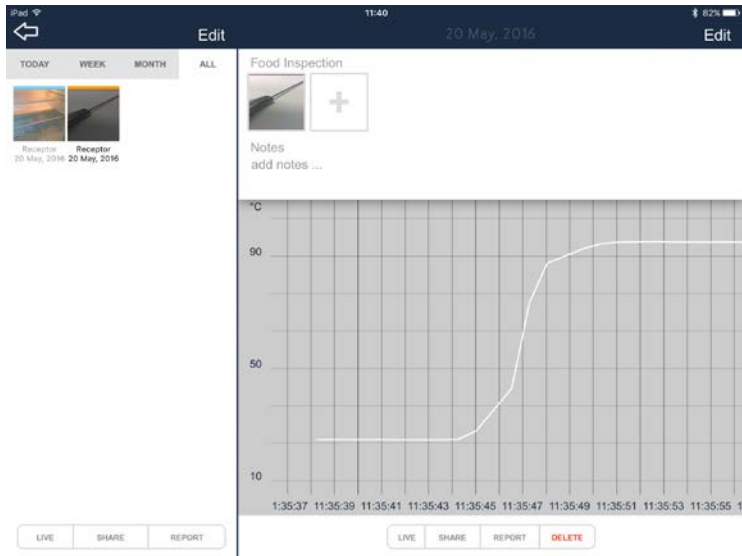
## Accuracy Chart

### Receptor - Temperature Accuracy Chart



## iCelsius App Screenshots





Done 11:41:03 May 20, 2016

**Aginova**  
AGILE INNOVATIONS

**Record Report** 11:41:03 May 20, 2016

**Receptor**  
 Started: 11:35:38 05-20-2016  
 Ended: 11:36:18 05-20-2016  
 Duration: 0h 0m 39s

**Temperature**  
 Min: 24.55°C Max: 95.21°C Average: 76.20°C Std dev: 26.70°C

**Humidity**  
 Min: 0.00% Max: 0.00% Average: 0.00% Std dev: 0.00%

## More information

Find us on the Internet:



[www.foodinspector.us](http://www.foodinspector.us) *and* [www.aginova.com](http://www.aginova.com)



<https://www.facebook.com/Receptor-453078305054017/>



@ReceptorInspect

Contact us:

**U.S. Office:**

Aginova Inc.

7552 Central Park Blvd

Mason, OH 45040

Phone: +1 513 204 5837

Fax: +1 732 879 0248

[info@foodinspector.us](mailto:info@foodinspector.us)

**European Office:**

Aginova Sàrl

PSE-D, EPFL

CH-1015 Lausanne, Switzerland

Phone: +41 21 693 8691

Fax: +41 21 693 8692

[info@foodinspector.us](mailto:info@foodinspector.us)